

## The affordable Transportation Management System for SME road-freight logistics providers that want fast results.

- ❑ Reduce cost by optimizing your fleet's utilization
- ❑ Increase process efficiency for operational savings
- ❑ Impress customers with higher service levels

### Affordable and easy to use for fast ROI

#### Solid out-of-the-box features

- ❑ Order & Capacity Management
- ❑ Transportation Planning
- ❑ Invoicing & Reporting

#### Powerful extension modules

- ❑ Multi-modal Support
- ❑ Real-time Trip Optimization
- ❑ Event Tracking
- ❑ Interfaces for Telematics etc.

### Easy Order and Capacity Management

Administrate orders and private fleet capacities through a clean and simple browser-based interface. *Living Systems TMS* lets you stay on top of all order fulfillment requirements and gives you the up-to-date information your customers expect when they make an inquiry.

### Smart Planning with Decision Support

*Living Systems TMS* streamlines the dispatching process and supports all essential tasks for consolidating loads and planning least-cost routes. The optional real-time optimization module helps dispatchers deal with order changes or unexpected events and guides them in hectic situations.

### Fleet Procurement and Multimodal Execution

Manage the assignment of loads and routes to private and leased fleets, optionally spanning any number of multimodal capacities. *Living Systems TMS* keeps a full record of resource capacities and availabilities, including scheduled vehicle maintenance and drivers' rest periods.

### Event Tracking and Handling

The optional *Living Systems TMS* event management module continuously monitors order and capacity related events. It classifies events according to their potential impact and provides tailored information to affected users and other systems.

### Simplified Financial Administration

*Living Systems TMS* keeps a separate track of end-user freight charges and payments made to carriers. It manages multiple tariff variations for leased fleet capacities and factors in applicable service agreement differences.

### Performance Monitoring and Reports

Get live visibility on key performance indicators (KPIs) such as cost per metric or capacity utilization. Track current status and historic developments through optional personalized online dashboards and reports.



## Select Features

### Order and capacity management

Living Systems TMS provides front office staff with direct access to:

- Customer Management: Import and create customer accounts, view order and billing history, manage and assign service level categories
- Order Processing: Create and edit orders, release them for execution
- Capacities: Manage private fleet capacities and details, subcontractors and their transportation capacities
- Billing: Create and print invoices, track their status
- Reports: Print or export reports to PDF and Excel with e-mail support

### Transportation planning

The planning system uses *Whitestein's* smart and easy-to-use *LS/ATN* transportation dispatch software to:

- Build and modify moves at any time
- Assign to private or leased capacities (spot market and freight exchange interfaces optional)
- Instruct operators through a telematics system (interface optional) or procure capacity via Web, e-mail, fax, or phone
- Track the progress of moves in execution and alert in case of deviations
- Release for billing after final confirmation

### Reporting and Management Information System (MIS)

Powerful reporting functions provide real-time visibility on capacity requirements, utilization, purchasing effectiveness, or other key performance metrics across the entire organization:

- Powerful filtering options
- Share reports through e-mail, PDF or export to Excel for further analysis
- Personalized real-time management dashboards (optional)

### Continuous optimization

The optional decision support module can propose least-cost sequence of order collections and deliveries for each move, taking advantage of multi-stop, continuous move and merge-in-transit opportunities:

- Order consolidation into larger units
- Part load merging to maximize capacity utilization
- Intermodal moves combining transportation modes

Plan and reality often diverge under dynamic conditions. *Living Systems TMS'* continuous optimization assists dispatchers during the entire transportation life cycle and takes into account changes as they happen.

### Event management

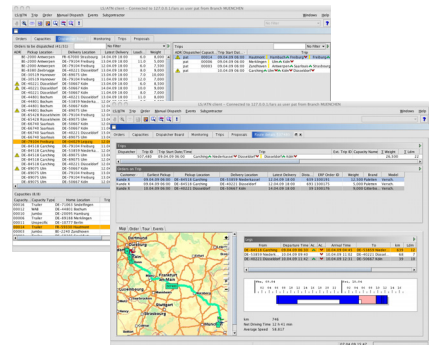
The optional event management component of *Living Systems TMS* alerts and acts on a variety of events:

- Order related events, for example a new order that needs to be added to an in-progress move or a change to an existing order
- Capacity related events, for example delays and vehicle breakdowns (telematics interface optional)

## Standard Telematics interfaces

*Living Systems TMS* works with many Telematics solutions out-of-the-box:

- FleetBoard
- Funkwerk eurotelematik
- OHB Teledata
- Transics
- Others by request



## Über Whitestein Technologies

Whitestein Technologies is a pioneer of self-adaptive enterprise software.

We create software that responds to changing conditions so it can optimize your processes and infrastructures in real-time. To stay ahead, we are continuously advancing our innovations in the field of autonomous software agent technology.

Whitestein Technologies was founded in 1999 and is privately held. The firm is headquartered in Zürich (Switzerland) with several global offices.

## Contact Information

Whitestein Technologies AG  
Tödistrasse 23  
CH-8002 Zürich  
Switzerland

Phone +41 44 -256-5000  
Fax +41 44-256-5001  
E-mail [info@whitestein.com](mailto:info@whitestein.com)

For more information, please also visit our Web site at <http://www.whitestein.com>.

All information herein are subject to change without further notice.

Whitestein Technologies, Living Systems, and the corresponding logos are registered trademarks of Whitestein Technologies AG.

All company, product, or service names may be trademarks or service marks of their respective holders.